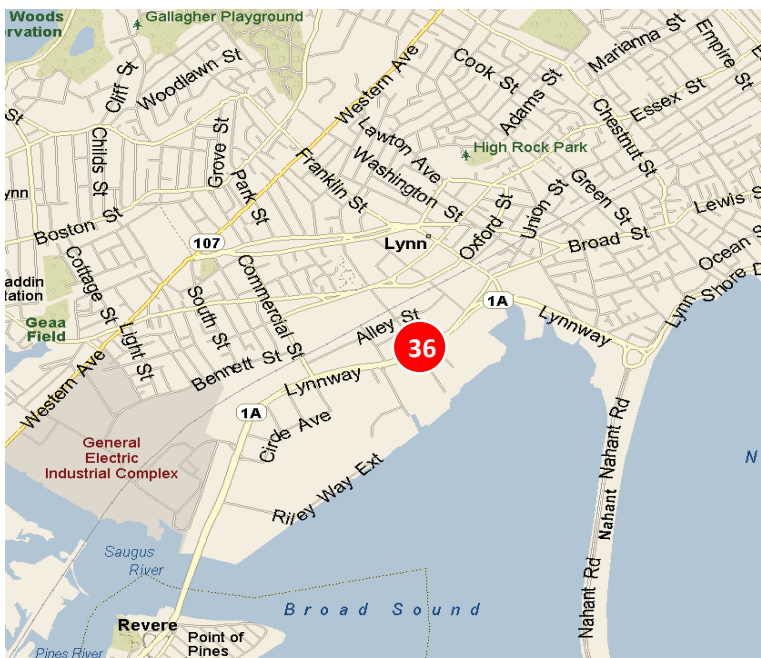
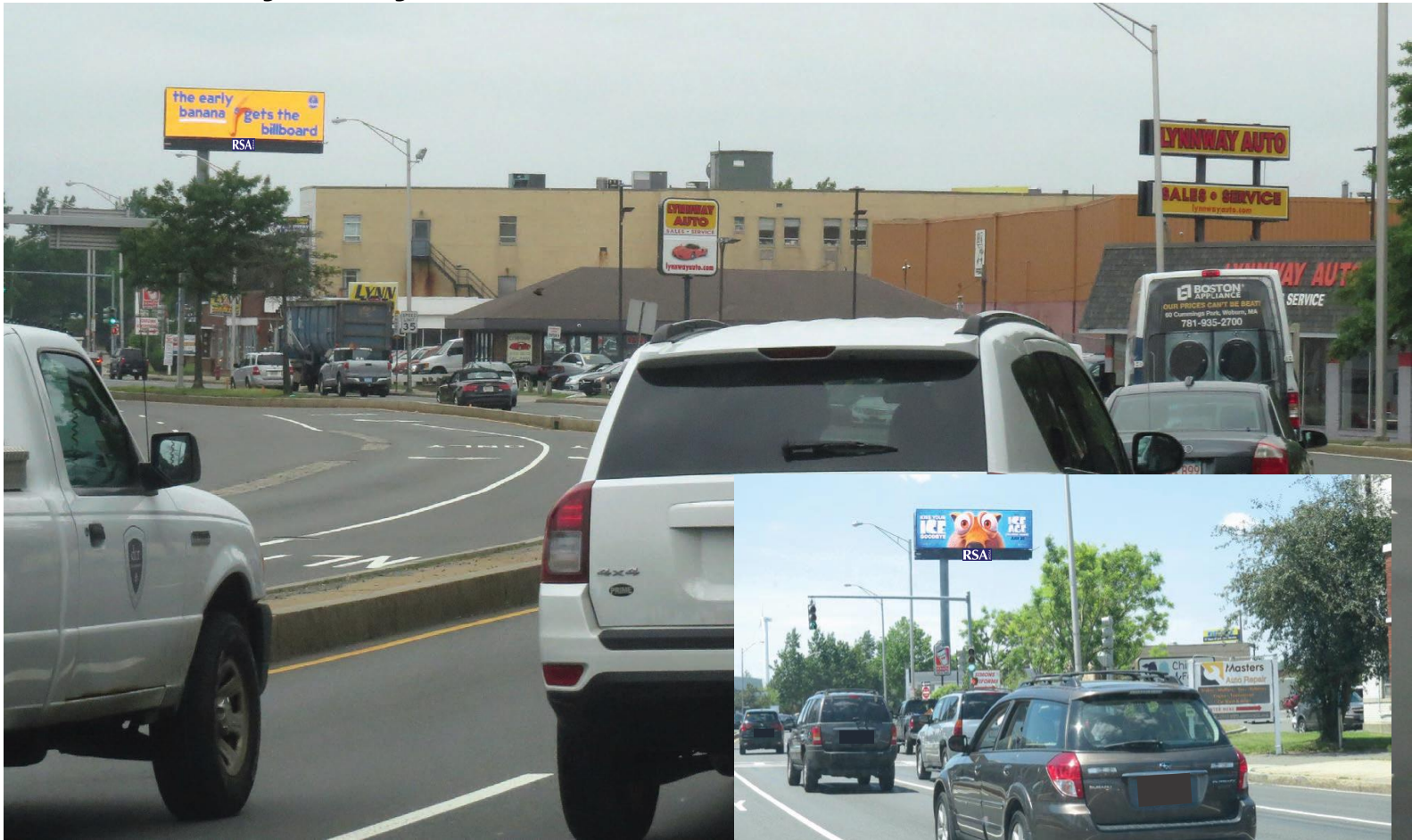


Rte. 1A/Lynnway WL 164' N/O Blossom St. NF - **DIGITAL**



DESCRIPTION

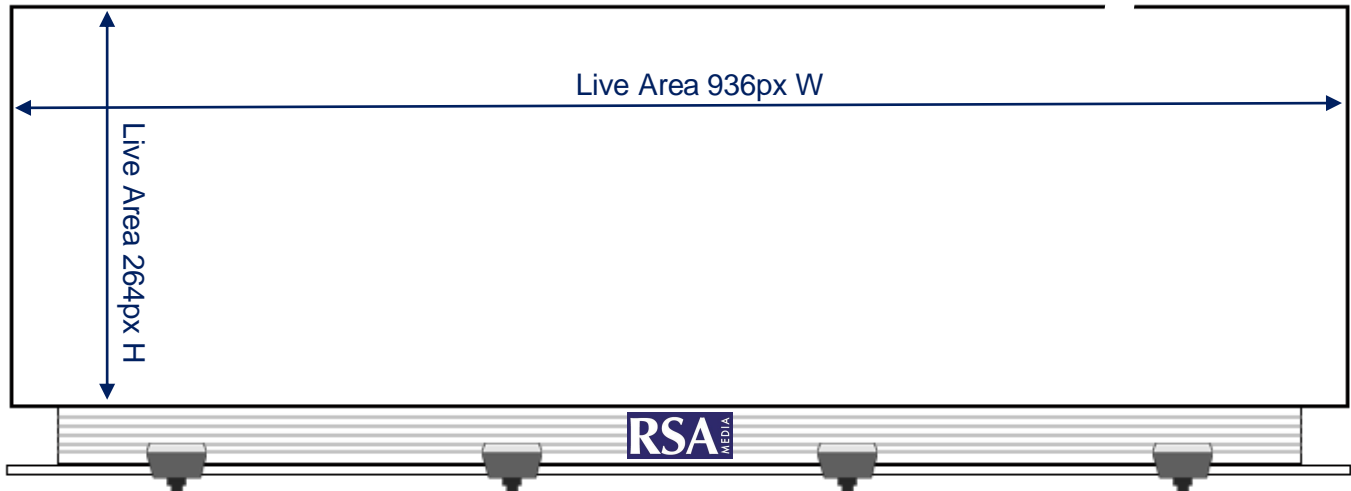
LYNN - This 14' by 48' digital bulletin, located on the heavily traveled Lynnway (Route 1A), is seen by commuters traveling south to Boston and Logan International Airport from the densely populated communities of the North Shore, including Lynn, Nahant, Swampscott, Salem, and Marblehead. Nearby is the General Electric plant that operates 24 hours a day employing 4,000 aircraft engineers. Also nearby are numerous car dealerships, ocean-front restaurants and Nahant Beach.

SIZE: 14'H X 48'W

WEEKLY A18+ IMPs: 183,713 PER SPOT

LONGITUDE: -70.9503 **LATITUDE:** 42.4576

Rte. 1A/Lynnway WL 164' N/O Blossom St. NF - **DIGITAL**



MATERIAL: Digital

PIXEL DIMENSIONS: 264H x 936W

RESOLUTION: 72 PPI

ORIENTATION: South

OTHER: N/A

FILE PREPARATION: Finished as JPEGS. Color should be RGB or YCbCr. Artwork received after 5PM will be uploaded on the following business day.

FILES: Files should be sent to Susan@rsamedia.com

ARTWORK INQUIRIES, FILES:

RSA Media c/o Susan Eastman
10 Presidential Way, Suite 1004
Woburn, MA 01801
617.227.4858
Susan@rsamedia.com