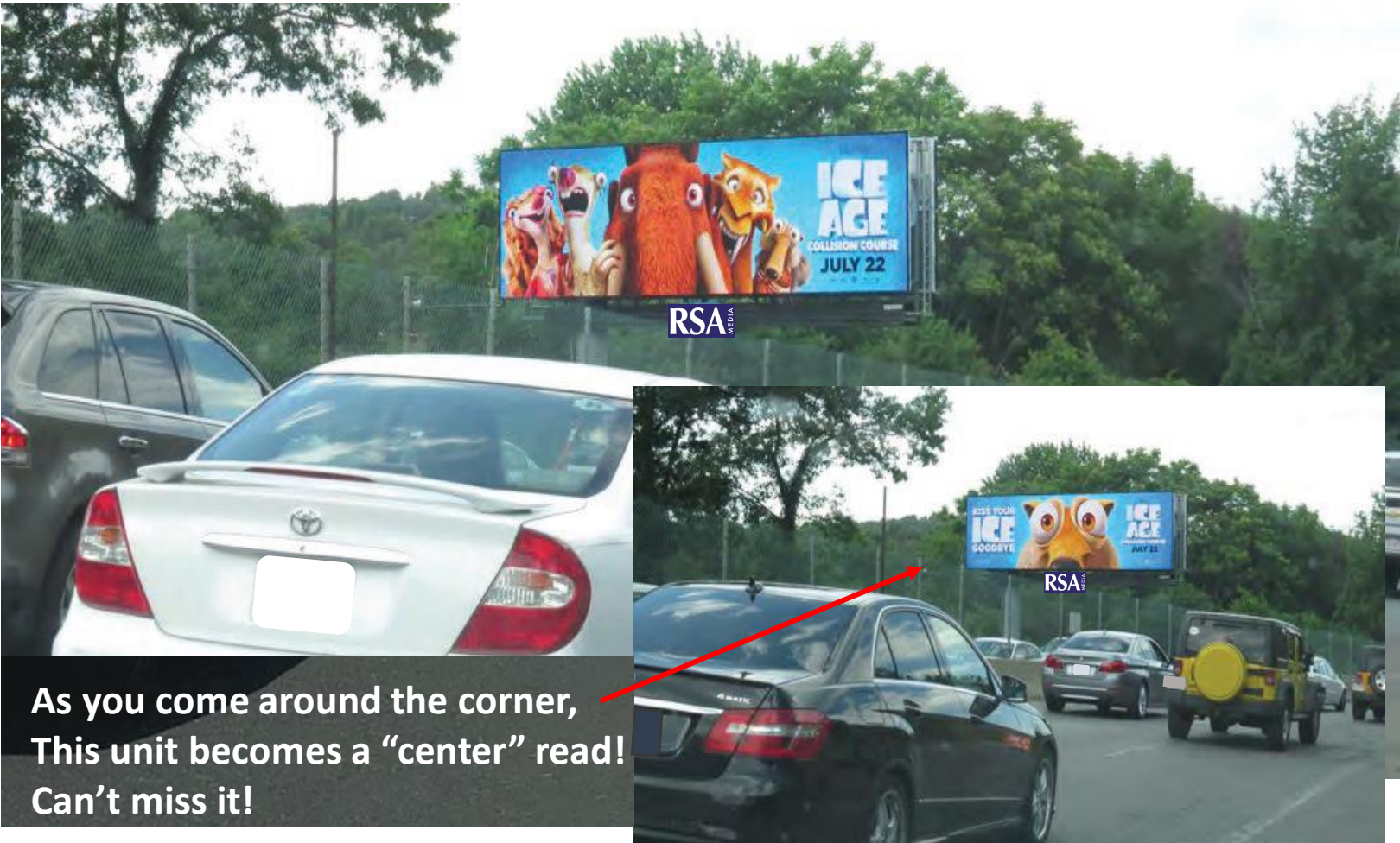
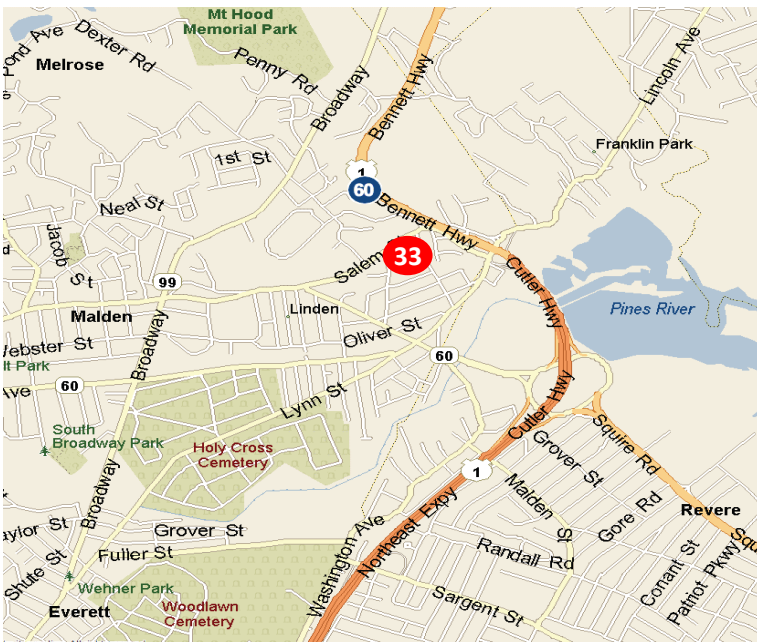


Rte. 1 WL 2,640' N/O Lynn St., F/S – Malden - **DIGITAL**



As you come around the corner,  
This unit becomes a “center” read!  
Can't miss it!



### DESCRIPTION

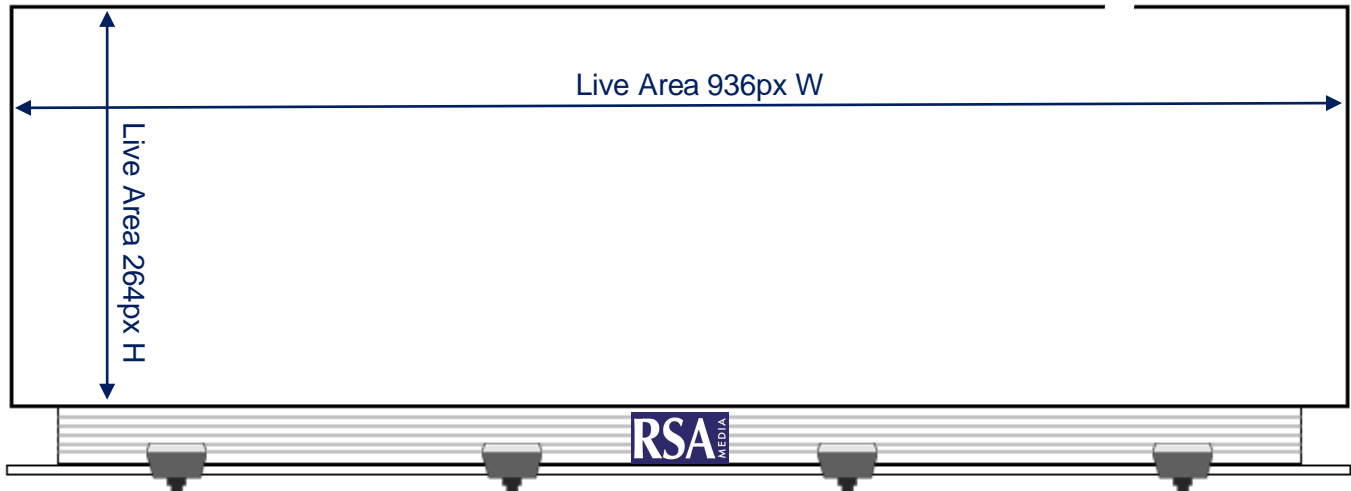
MALDEN - This 14' x 48' digital bulletin is located on the heavily traveled Route 1. This unit is seen by all traffic heading from Boston and Logan international airport to the densely populated communities north and northeast of the city, and by those traveling south from New Hampshire and Maine. This road is also used by local traffic coming to and from the surrounding neighborhoods of Medford, Malden, Melrose, Chelsea, Revere, and Saugus.

**SIZE:** 14'H X 48'W

**WEEKLY A18+ IMPs:** 289,376 PER SPOT

**LONGITUDE:** -71.0282 **LATITUDE:** 42.4399

Rte. 1 WL 2,640' N/O Lynn St., F/S – Malden - **DIGITAL**



**MATERIAL:** Digital

**PIXEL DIMENSIONS:** 264H x 936W

**RESOLUTION:** 72 PPI

**ORIENTATION:** North

**OTHER:** N/A

**FILE PREPARATION:** Finished as JPEGs. Color should be RGB or YCbCr. Artwork received after 5PM will be uploaded on the following business day.

**FILES:** Files should be sent to [Susan@rsamedia.com](mailto:Susan@rsamedia.com)

#### ARTWORK INQUIRIES, FILES:

RSA Media c/o Susan Eastman  
10 Presidential Way, Suite 1004  
Woburn, MA 01801  
617.227.4858  
[Susan@rsamedia.com](mailto:Susan@rsamedia.com)